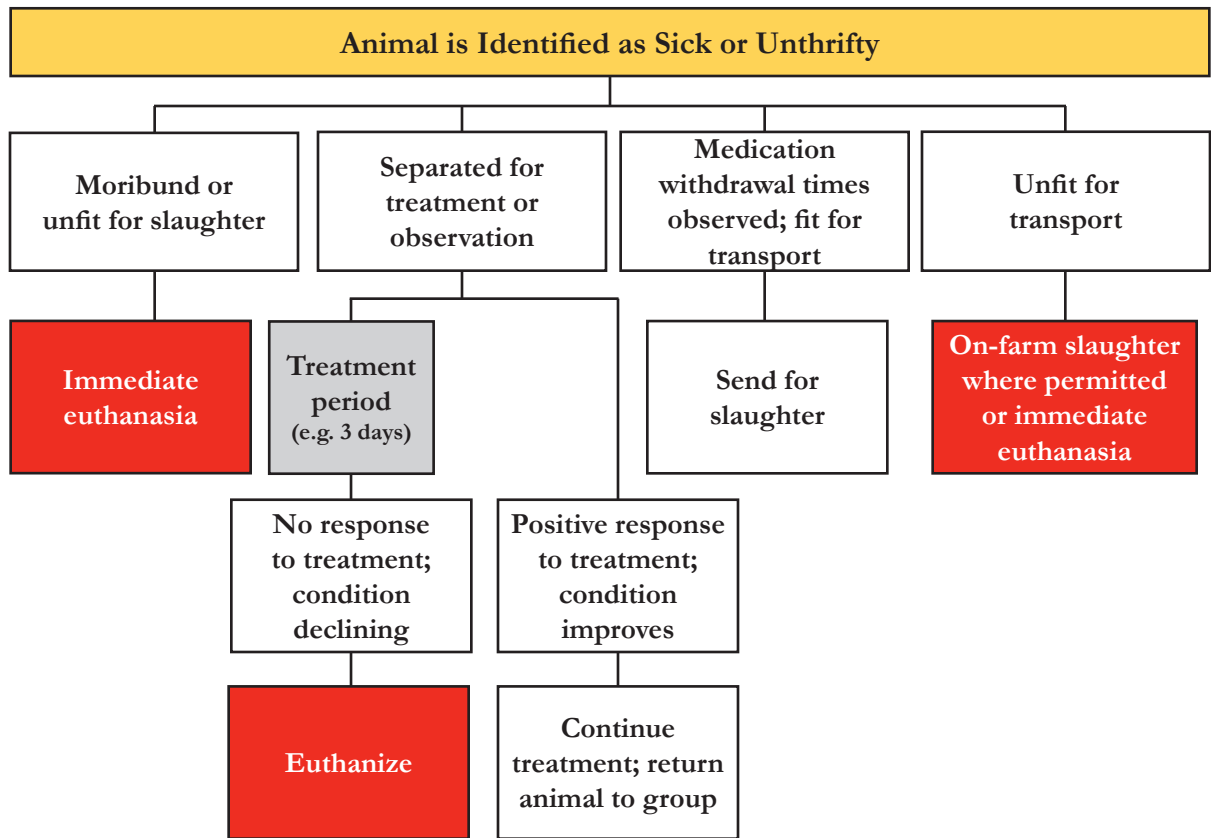




Example of Decision Tree for Euthanasia



Examples of criteria for euthanizing weanling or growing pigs (42):

- weak, unable to stand
- unable to eat or drink
- moderate to severe lameness
- fractured leg
- severely damaged digits
- infected tail, ear, or flank bites
- severe rectal prolapse (protruding or damaged)
- postnatal development of scrotal, inguinal, or umbilical hernia
- repaired hernia with abscessation, moderate swelling, or continued drainage
- severe body weight loss (20% or greater)
- severe diarrhea with dehydration (no response to treatment in 2 or more days)
- respiratory disease with difficult or laboured breathing (no response to treatment in 2 or more days)