

WHAT SIZED EXISTING RABBIT CAGES ARE REQUIRED?



Cages/pens must be replaced or modified in accordance with the requirements for new cages if ear lesions exceed 5% in the herd.



Floor space per animal must be increased in accordance with the requirements for new cages if:

- Growing rabbits do not maintain normal body condition and weight gain throughout production.
- Injuries from aggression due to inadequate space exceed 8% in group housed rabbits.



Made of suitable materials



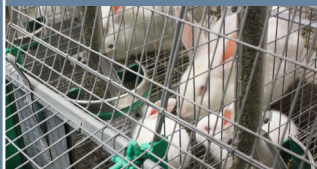
Includes proper drainage



Appropriate floor space

WHAT SIZE DO EXISTING CAGES/PENS NEED TO BE?

Minimum Height No Platform



Minimum Floor Space



MATURE BUCKS
(i.e. >16 weeks of age)

0.36 m²
(3.88 ft²)

REPLACEMENT BUCKS
(i.e. 12-16 weeks of age)

0.12 m²
(1.29 ft²)

DOE WITH KITS
younger than 21 days of age

0.22 m²
(2.37 ft²)

DOE WITH KITS
older than 21 days of age or
MATURE DOE
(i.e. >5kg [11lb]) without kits

30.5 cm
(12 in)

0.32 m²
(3.44 ft²)

REPLACEMENT DOE
older than 12 weeks of age

0.12 m² (1.29 ft²)
MUST NOT EXCEED
5 kg/0.12m² (11 lb/1.3 ft²)

GROWING RABBITS

0.055 m² (0.59 ft²)/growing rabbit
MUST NOT EXCEED
45 kg/m² (9.2 lb/ft²)

WANT TO LEARN MORE?

See Table 2 - Rabbit Code of Practice (2018) - Page 11
<http://www.nfacc.ca/rabbit-code-of-practice#section1>